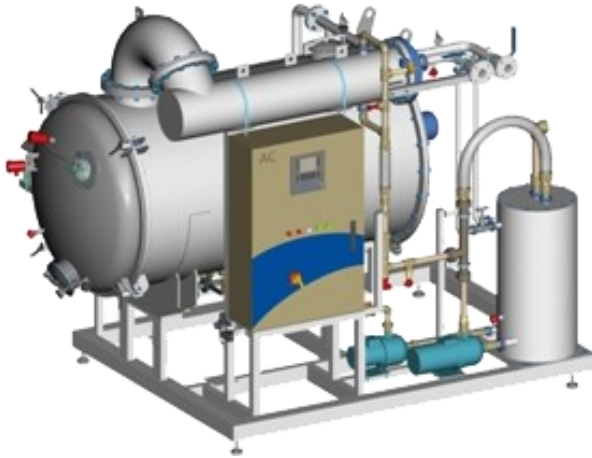


SCRAPED HOT/COLD WATER EVAPORATOR (AC RW)



Shown: AC RW800 FF 4

The Scraped Hot/Cold Water Evaporator is a fully automated, compact, skid mounted treatment system that allows extreme recovery of wastewater stream for recycling, concentrating contaminants into a slurry with water content less than 15%. The system creates a vacuum in a boiling chamber, reducing the boiling temperature to approximately 104°F, thereby allowing efficient and cost effective separation of water from other contaminants. Semi-continuous, reliable, and efficient automatic operation on a 24/7 basis is achieved using existing facility hot and cold water loops for boiling and condensation, often in cogeneration applications. Separates oils, salts, and other organic and inorganic compounds from wastewater into solid or semi-solid concentrate.

Specifications:

- 792 to 10,567 gallon per day models available
- Extremely low operating costs when used in cogeneration applications
- Skid mounted design, ready to install
- Factory-piped, wired, and tested before shipment

Standard Features

- NEMA 4 powder coated steel control panel
- Siemens PLC-based control system with color touchscreen HMI
- Stainless steel frame with weather-resistant panels
- 316L, Superduplex 2507, or Hastelloy C22 critical wetted components
- 316L and polypropylene non-critical wetted components
- Connections for facility hot and cold water supplies
- Automatic anti-foam injection

Optional Features

- Pre- and post-treatment systems
- Storage tanks for process liquids
- pH adjustment of distillate
- Bactericide metering
- Concentrate transfer pumps
- Distillate transfer pumps
- Distillate conductivity meter
- Automatic chemical washing
- Custom configurations by request



Shown: Typical concentrate

ORDERING INFORMATION				
AC RW	Scraped Hot/Cold Water Evaporator			
	Capacity (Choose One)			
	800	792 Gallons per Day		
	1600	1,585 Gallons per Day		
	11000	10,567 Gallons per Day		
	Wetted Material (Choose One)			
	AA	316L Stainless Steel		
	FF	Superduplex 2507		
	HH	Hastelloy C22		
	Power Requirements (Choose One)			
	3A	208 VAC / 3 / 60 Hz		
	3B	230 VAC / 3 / 60 Hz		
	4	460 VAC / 3 / 60 Hz		
Example Part Number				
AC RW	800	AA	4	AC RW800 AA 4
AC RW	1600	FF	3B	AC RW1600 FF 3B

