

AIR OPERATED DIAPHRAGM PUMP LIFT STATIONS (AOPLS)



Shown: Duplex 1" Pumps with 56 gallon tank and pulsation dampener. (DAOPLS-56-010-P-TC-ST-PD)



Shown: Simplex 1" Pump with double contained 32 gallon tank. (SAOPLS-32-010-P-TC-DC)

Wastech standard air-operated pump lift stations are designed to safely and efficiently transfer many classes of liquids including wastewater and slurries when a gravity drain is not possible. Lift stations use one or two air-operated diaphragm pumps and are controlled by Wastech Industrial AOD Pump Control Panels (IAPCP). Custom configurations and sizes are available, call or e-mail Sales for more information.

Specifications

- Simplex (one pump) or duplex (two pumps) configuration.
- Multipoint level switch assembly with digital level display.
- Each pump has a separate lockable air valve that allows maintenance work to be performed on one pump while the other is still in service.
- All pump lift stations include a high-high level switch to activate a high level alarm.
- Lift stations require Wastech IAPCP series industrial control panels (or equivalent).

Standard Features

- Molded Polyethylene tank (16, 32, and 56 gallon tanks standard, custom sizes available)
- Fabricated polypropylene lid
- One or two air-operated polypropylene double diaphragm style pump(s) with Teflon diaphragms
- Lockable air valve for each pump
- 2" FNPT top mount inlet connection
- 2" FNPT top mount vent connection
- 4"x6" view window for maintenance access
- Multipoint level switch assembly with digital level display

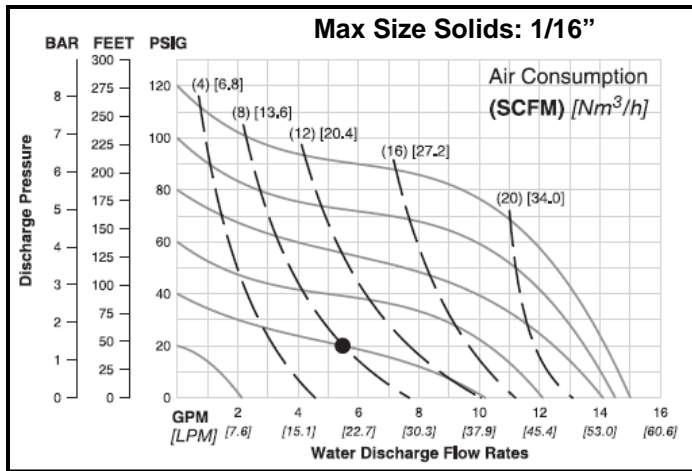
Optional Features

- Fabricated polypropylene double containment tank with float leak switch
- 6' pre-wired flex cable/pneumatic tubing to connect to remote control panel
- Discharge Pulsation Dampener with Teflon Diaphragm
- Side inlet connection
- Seismic tie-downs
- PVDF pumps and fittings

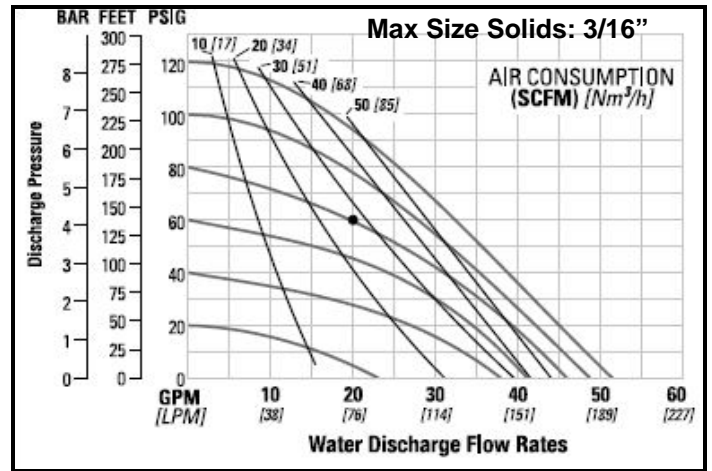
ORDERING INFORMATION

Number of Pumps (Choose One)						
SAOPLS	Simplex AOD Pump Lift Station					
DAOPLS	Duplex AOD Pump Lift Station					
Tank Volume (Choose One – See next page for available combinations)						
-16	16 Gallon Polyethylene Molded Tank					
-32	32 Gallon Polyethylene Molded Tank					
-56	56 Gallon Polyethylene Molded Tank					
Pump Size (Choose One – See next page for available combinations)						
-005	½ " Connection					
-010	1 " Connection					
Discharge Piping Material (Choose One)						
-P	PVC Discharge Piping and Ball Valve (Viton Elastomers)					
-C	CPVC Discharge Piping and Ball Valve (Viton Elastomers)					
Inlet Connection (Choose One)						
-TC	Top Connection (2" FNPT)					
-SC-XX"	Side Connection (2" FNPT) – Specify Height From Bottom To Centerline					
Options (Choose Any)						
-DC	Double Containment With Float Leak Switch					
-PD	Pulsation Dampener w/PTFE Diaphragm					
-FC	6 FT Elec. Flex Conduit & Pneumatic Tubing Between Lift Station and Control Panel					
-ST	Seismic Tie-Downs (Qty. 2)					
Example Part Number						
SAOPLS	-16	-005	-P	-TC	-DC-ST	SAOPLS-16-005-1-P-TC-DC-ST

PUMP PERFORMANCE CURVES



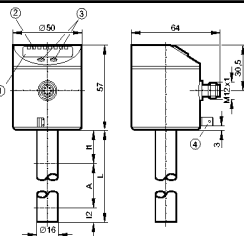
1/2" Pump Performance Curve



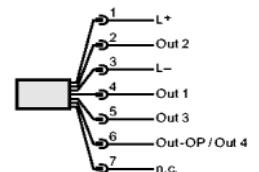
1" Pump Performance Curve

LEVEL SWITCH TECHNICAL INFORMATION

- Electronic level sensor
- Quick disconnect
- Probe length
L = 18 in
- 3 operating outputs (OUT1...OUT3)
- 1 overflow output (OUT-OP)
- Indication of the level in inches or cm



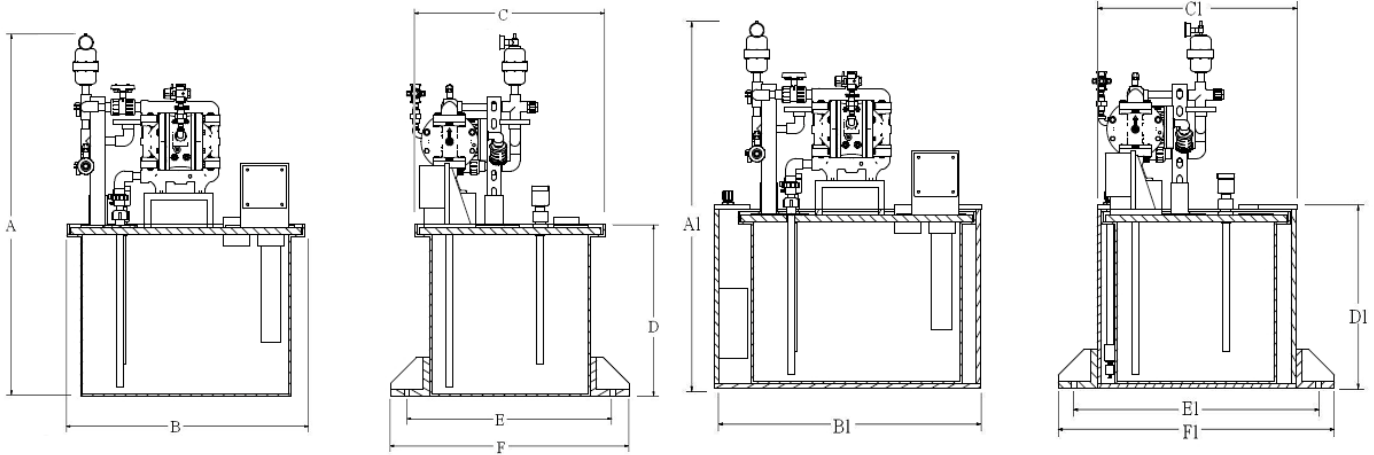
- 1: 4-digit alphanumeric display
- 2: LEDs
- 3: Programming buttons
- 4: Housing connection (flat-pin connector 6.3 mm following DIN)



DIMENSIONS AND TECHNICAL INFORMATION

	Part Number	Pump Size	Tank Size (gal)	Overall Dimensions ⁵											Dry Weight (lbs)		Discharge Connection Size ⁴	
				Without Double Containment						With Double Containment					Without Double Cont.	With Double Cont.		
				A	B	C	D	E	F	A1	B1	C1	D1	E1				F1
SIMPLEX	SAOPLS-16-005	½"	16	36	21	15	20	17	21	37	24	16	21	21	25	35	65	½"
	SAOPLS-16-005-PD	½"	16	42	21	15	20	17	21	43	24	16	21	21	25	40	70	½"
	SAOPLS-32-005	½"	32	36	28	22	20	23	27	37	31	23	21	28	32	50	100	½"
	SAOPLS-32-005-PD	½"	32	42	28	22	20	23	27	43	31	23	21	28	32	55	105	½"
	SAOPLS-32-010	1"	32	41	28	22	20	23	27	42	31	23	21	28	32	65	115	1"
	SAOPLS-32-010-PD	1"	32	53	28	22	20	23	27	54	31	23	21	28	32	70	120	1"
	SAOPLS-56-005	½"	56	31	33	28	20	29	33	32	36	29	21	34	38	70	135	½"
	SAOPLS-56-005-PD	½"	56	31	33	28	20	29	33	32	36	29	21	34	38	75	140	½"
	SAOPLS-56-010	1"	56	41	33	28	20	29	33	42	36	29	21	34	38	85	150	1"
SAOPLS-56-010-PD	1"	56	53	33	28	20	29	33	54	36	29	21	34	38	90	155	1"	

DUPLEX	DAOPLS-32-005	½"	32	36	28	22	20	23	27	37	31	23	21	28	32	60	110	½"
	DAOPLS-32-005-PD	½"	32	42	28	22	20	23	27	43	31	23	21	28	32	65	115	½"
	DAOPLS-56-005	½"	56	36	28	22	20	23	27	37	31	23	21	28	32	80	145	½"
	DAOPLS-56-005-PD	½"	56	42	28	22	20	23	27	43	31	23	21	28	32	85	150	½"
	DAOPLS-56-010	1"	56	41	33	28	20	29	33	42	36	29	21	34	38	100	165	1"
	DAOPLS-56-010-PD	1"	56	53	33	28	20	29	33	54	36	29	21	34	38	105	170	1"


Notes:

1. Remote control panel required – Please visit our website for details.
2. Maximum service temperature for all lift stations: 140 F
3. Standard valve elastomers are Viton. EPDM available upon request.
4. Standard lift station Inlets/vents are threaded (FNPT). Standard lift station discharge is a Flanged connection.
5. Tolerance for dimensions B-F ± 2%