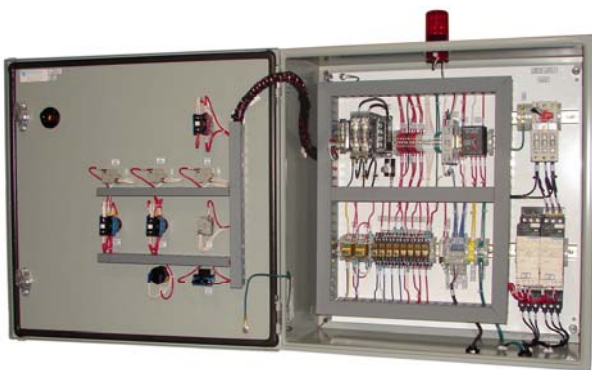


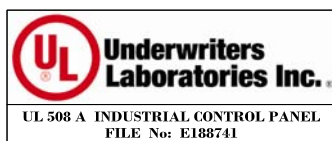
## INDUSTRIAL PUMP CONTROL PANELS (IPCP)



Shown: Duplex 1.5 HP Industrial Pump Control Panel with NEMA 4 enclosure, leak, audible and common alarms. (IPCP-DP-015-4-N4-LA-AA-CA)



Shown: Interior view of duplex 1.5 HP Industrial Pump Control Panel with NEMA 4 enclosure, leak, audible and common alarms. (IPCP-DP-015-4-N4-LA-AA-CA)



Wastech's standard industrial pump control panels are designed for simplex or duplex pump control in industrial pump down applications.

- Standard control panels for pump applications.
- Remote control panels for Wastech (VPLS) pump lift stations.
- Simplex (one pump) or duplex (two pumps) configurations.
- Single phase or three phase power.
- NEMA 4/4X, hinged door enclosures.
- Relay control.
- HOA switches for automatic or manual control.
- Alternating Lead/Lag on duplex models.
- All wires marked and color coded for simple installation and maintenance.
- Custom configurations including PLC control available, call or e-mail sales for more details.

### Standard Features

- UL Listed control panel
- Illuminated E-stop
- Lockable electrical disconnect
- Up to four (4) discrete level inputs for pump control
- Alternator (Pumps alternate automatically after every pump down cycle)
- Pump run selector switch (non-illuminated)
- Run light indicator
- Run permissive
- Overload light for each pump (for 208-230/460 VAC 3 PH panels)
- High-high level light
- High-high level dry contact

### Optional Features

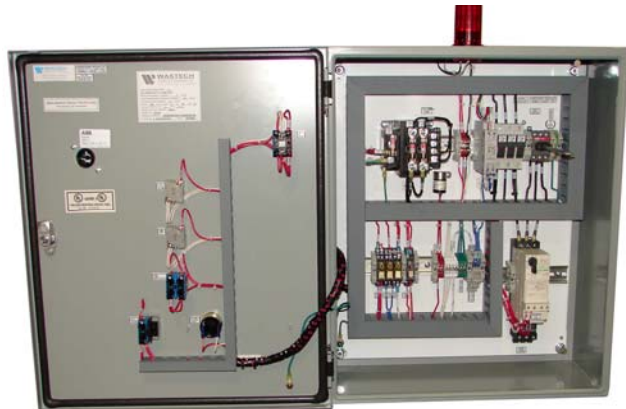
- Leak alarm red pilot light
- Audible alarm (Buzzer) with silence button
- Common alarm beacon with dry contact
- Pump run-time digital totalizer
- Push to test pilot lights

**ORDERING INFORMATION**

<b>IPCP</b>	
<b>Number of Pumps (Choose One)</b>	
<b>-SP</b>	Simplex (1 ½ HP motor the largest for 110 VAC panel)
<b>-DP</b>	Duplex (½ HP motor the largest for 110 VAC panel)
<b>Horsepower (Choose One)</b>	
<b>-005</b>	½ HP
<b>-007</b>	¾ HP
<b>-010</b>	1 HP
<b>-015</b>	1 ½ HP
<b>-020</b>	2 HP
<b>-030</b>	3 HP
<b>-050</b>	5 HP
<b>-075</b>	7 ½ HP
<b>Power Requirements (Choose One)</b>	
<b>-1</b>	115 VAC/1/60 Hz
<b>-2</b>	208-230 VAC/1/60 Hz
<b>-3</b>	208-230 VAC/3/60 Hz
<b>-4</b>	460/3/60 Hz
<b>Enclosure Rating (Choose One)</b>	
<b>-N4</b>	NEMA4 – Powder Coated Carbon Steel
<b>-N4XF</b>	NEMA4X - Fiberglass
<b>-N4XS</b>	NEMA4X – 304 Stainless Steel
<b>Options (Choose Any)</b>	
<b>-LA</b>	Leak alarm red pilot light
<b>-AA</b>	Audible alarm (Buzzer) with silence button
<b>-CA</b>	Common alarm beacon and dry contact
<b>-RT</b>	Run-time digital totalizer
<b>-PT</b>	Push to test pilot lights
<b>Example Part Number</b>	
IPCP	-SP -005 -1 -N4XF -LA-AA-PT



Shown: Simplex 5 HP Industrial Pump Control Panel with NEMA 4 enclosure, audible and common alarm. (IPCP-SP-050-3-N4-AA-CA)



Shown: Interior view of simplex 5 HP Industrial Pump Control Panel with NEMA 4 enclosure, audible and common alarm. (IPCP-SP-050-3-N4-AA-CA)

SPECIFICATIONS							
	PART NUMBER	VOLTAGE	AMPERAGE	ENCLOSURE SIZE (INCHES)			
				N4	N4XF	N4XS	
SIMPLEX	1/2 HP	IPCP-SP-005-1	115/1 PH	15	20x16x8	18x16x8	20x16x8
		IPCP-SP-005-2	208-230/1 PH	10	24x20x8	24x20x10	24x20x8
		IPCP-SP-005-3	208-230/3 PH	10	24x20x8	24x20x10	24x20x8
		IPCP-SP-005-4	460/3 PH	5	24x20x8	24x20x10	24x20x8
	3/4 HP	IPCP-SP-007-1	115/1 PH	25	20x16x8	18x16x8	20x16x8
		IPCP-SP-007-2	208-230/1 PH	12	24x20x8	24x20x10	24x20x8
		IPCP-SP-007-3	208-230/3 PH	10	24x20x8	24x20x10	24x20x8
		IPCP-SP-007-4	460/3 PH	6	24x20x8	24x20x10	24x20x8
	1 HP	IPCP-SP-010-1	115/1 PH	25	20x16x8	18x16x8	20x16x8
		IPCP-SP-010-2	208-230/1 PH	15	24x20x8	24x20x10	24x20x8
		IPCP-SP-010-3	208-230/3 PH	12	24x20x8	24x20x10	24x20x8
		IPCP-SP-010-4	460/3 PH	6	24x20x8	24x20x10	24x20x8
	1 1/2 HP	IPCP-SP-015-1	115/1 PH	30	20x16x8	18x16x8	20x16x8
		IPCP-SP-015-2	208-230/1 PH	15	24x20x8	24x20x10	24x20x8
		IPCP-SP-015-3	208-230/3 PH	15	24x20x8	24x20x10	24x20x8
		IPCP-SP-015-4	460/3 PH	8	24x20x8	24x20x10	24x20x8
	2 HP	IPCP-SP-020-2	208-230/1 PH	20	24x20x8	24x20x10	24x20x8
		IPCP-SP-020-3	208-230/3 PH	17.5	24x20x8	24x20x10	24x20x8
		IPCP-SP-020-4	460/3 PH	10	24x20x8	24x20x10	24x20x8
	3 HP	IPCP-SP-030-2	208-230/1 PH	25	24x20x8	24x20x10	24x20x8
IPCP-SP-030-3		208-230/3 PH	20	24x20x8	24x20x10	24x20x8	
IPCP-SP-030-4		460/3 PH	10	24x20x8	24x20x10	24x20x8	
5 HP	IPCP-SP-050-3	208-230/3 PH	25	24x20x8	24x20x10	24x20x8	
	IPCP-SP-050-4	460/3 PH	15	24x20x8	24x20x10	24x20x8	
7 1/2 HP	IPCP-SP-075-3	208-230/3 PH	30	24x20x8	24x20x10	24x20x8	
	IPCP-SP-075-4	460/3 PH	20	24x20x8	24x20x10	24x20x8	
DUPLX	1/2 HP	IPCP-DP-005-1	115/1 PH	25	20x20x8	24x24x8	20x20x8
		IPCP-DP-005-2	208-230/1 PH	15	24x24x8	24x24x8	24x24x8
		IPCP-DP-005-3	208-230/3 PH	10	24x24x8	24x24x8	24x24x8
		IPCP-DP-005-4	460/3 PH	10	24x24x8	24x24x8	24x24x8
	3/4 HP	IPCP-DP-007-2	208-230/1 PH	17.5	24x24x8	24x24x8	24x24x8
		IPCP-DP-007-3	208-230/3 PH	10	24x24x8	24x24x8	24x24x8
		IPCP-DP-007-4	460/3 PH	10	24x24x8	24x24x8	24x24x8
	1 HP	IPCP-DP-010-2	208-230/1 PH	20	24x24x8	24x24x8	24x24x8
		IPCP-DP-010-3	208-230/3 PH	15	24x24x8	24x24x8	24x24x8
		IPCP-DP-010-4	460/3 PH	10	24x24x8	24x24x8	24x24x8
	1 1/2 HP	IPCP-DP-015-2	208-230/1 PH	30	24x24x8	24x24x8	24x24x8
		IPCP-DP-015-3	208-230/3 PH	17.5	24x24x8	24x24x8	24x24x8
		IPCP-DP-015-4	460/3 PH	10	24x24x8	24x24x8	24x24x8
	2 HP	IPCP-DP-020-2	208-230/1 PH	30	24x24x8	24x24x8	24x24x8
		IPCP-DP-020-3	208-230/3 PH	20	24x24x8	24x24x8	24x24x8
		IPCP-DP-020-4	460/3 PH	15	24x24x8	24x24x8	24x24x8
	3 HP	IPCP-DP-030-3	208-230/3 PH	25	24x24x8	24x24x8	24x24x8
		IPCP-DP-030-4	460/3 PH	15	24x24x8	24x24x8	24x24x8
	5 HP	IPCP-DP-050-4	460/3 PH	25	24x24x8	24x24x8	24x24x8
	7 1/2 HP	IPCP-DP-075-4	460/3 PH	30	24x24x8	24x24x8	24x24x8