

VERTICAL PUMP LIFT STATIONS (VPLS)



Shown: Duplex 3/4 HP pumps with 56 gallon double - contained tank and lockable electrical disconnects for each pump. (DVPLS-56-DC-007-3A-PV-TI-VM)



Shown: Simplex 1/2 HP pump with 32 gallon fabricated polypropylene tank. (SVPLS-32-SC-005-1-CP-ST)

Wastech standard pump lift stations are designed for transferring water, chemicals and waste water when a gravity drain is not possible. Larger pump and tank sizes and custom configurations available, call or e-mail Sales.

Specifications

- Simplex (one pump) or duplex (two pumps) configuration.
- Multipoint level switch assembly with digital level display.
- Check valves on the discharge of each pump to prevent liquid from flowing back into the tank once the pumps stop.
- Each pump has a separate lockable motor disconnect that allows maintenance work to be performed on one pump while the other is still in service.
- All pump lift stations include a high-high level switch to activate a high level alarm.
- Lift stations require Wastech IPCP series industrial control panels (or equivalent).

Standard Features

- Fabricated polypropylene tank (16, 32, and 56 gallon tanks standard, custom sizes available)
- Fabricated polypropylene lid
- One or two pumps - CPVC pump head (standard)
- Pump suction strainer(s)
- TEFC thermally protected motors
- Lockable disconnect for each pump
- Check valve for each pump with Viton elastomers
- 2" FNPT top mount inlet connection
- 2" FNPT top mount vent connection
- 4"x6" view window for maintenance access
- Multipoint level switch assembly with digital level display
- NEMA 4X junction box to connect to remote control panel

Optional Features

- Fabricated polypropylene double containment tank with float leak switch
- 6' pre-wired flex cable to connect to remote control panel
- Side inlet connection
- Discharge manifold with isolation ball valves
- Seismic tie downs
- PP and PVDF pumps and fittings
- Stainless and PVDF tanks

ORDERING INFORMATION

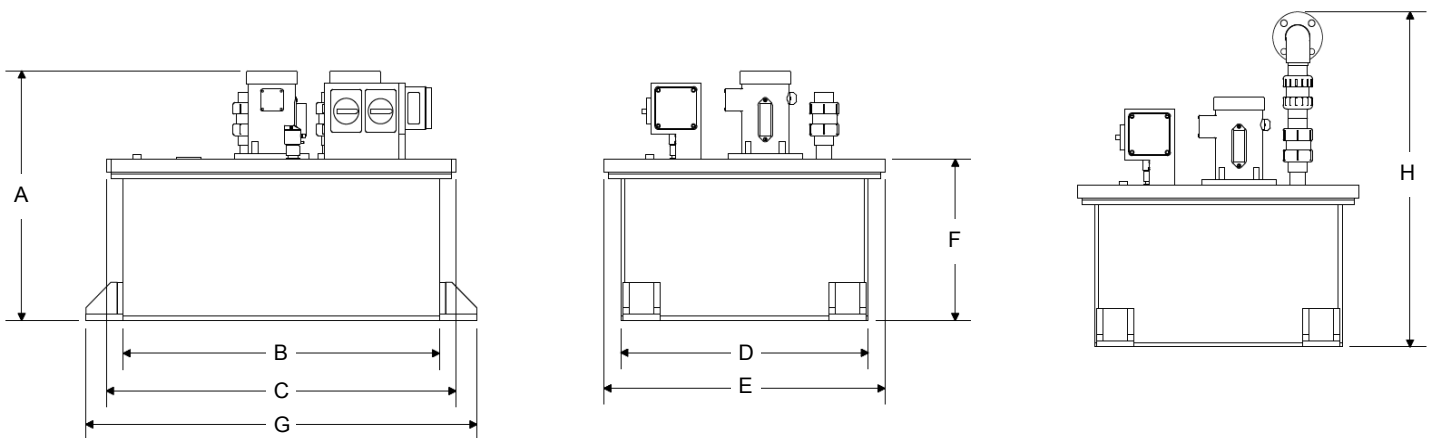
Number of Pumps (Choose One)								
SVPLS	Simplex Vertical Pump Lift Station							
DVPLS	Duplex Vertical Pump Lift Station							
Tank Volume (Choose One)								
-16	16 Gallon Fabricated Polypropylene Tank – Simplex Lift Stations ½ HP and ¾ HP Only							
-32	32 Gallon Fabricated Polypropylene Tank							
-56	56 Gallon Fabricated Polypropylene Tank							
-XX	Custom Volumes Available							
Double Containment Requirement (Choose One)								
-SC	Single Contained Tank (No Containment)							
-DC	Double Contained Tank With Float Leak Switch							
Horsepower (Choose One)								
-005	½ HP							
-007	¾ HP							
-010	1 HP							
-015	1 ½HP							
Power Requirements (Choose One)								
-1	115 VAC / 1 / 60 Hz							
-2A	208 VAC / 1 / 60 Hz							
-2B	230 VAC / 1 / 60 Hz							
-3A	208 VAC / 3 / 60 Hz							
-3B	230 VAC / 3 / 60 Hz							
-4	460 VAC / 3 / 60 Hz							
Discharge Piping Material (Choose One)								
-PV	PVC Discharge Piping and Check Valve (Viton Elastomers)							
-CP	CPVC Discharge Piping and Check Valve (Viton Elastomers)							
-PP	Polypropylene Discharge Piping and Check Valve (Viton Elastomers)							
-PF	PVDF Discharge Piping and Check Valve (Viton Elastomers)							
Inlet Connection (Choose One)								
-TI	Top Inlet Connection (2" FNPT)							
-SI-XX"	Side Inlet Connection (2" FNPT) – Specify Height From Bottom To Centerline							
Options (Choose Any)								
-FC	6 FT Elec. Flex Conduit Between Lift Station and Control Panel							
-ST	Seismic Tie-Downs							
-VM	Valve Manifold w/ 2 Ball Valves (Viton) and Common 2" Discharge							
Example Part Number								
DVPLS	-32	-DC	-007	-3A	-PV	-SI-10"	-FC-ST	DVPLS-32-DC-007-3A-PV-SI-10"-FC-ST

Notes:

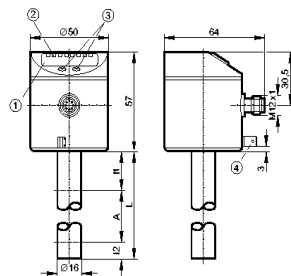
1. Remote control panel required – Please visit our website for details.
2. Maximum service temperature for lift stations: PV: 120 °F. PP: 140 °F. CP/PF: 160 °F.
3. Standard valve elastomers are Viton. EPDM available upon request.
4. Standard lift station connections are socket and threaded (FNPT). Flanged connections available upon request.
5. Lift stations with valve manifold (VM) option have a 2" common flanged connection. Other connections (socket, threaded) available upon request.
6. Tolerance for dimensions ± 2%

OVERALL DIMENSIONS & WEIGHTS

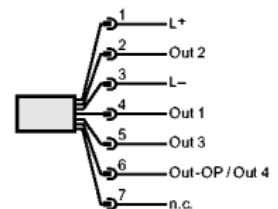
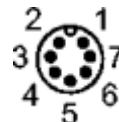
Tank Size (Gal.)	Containment	# Pumps	Dry Weight (lbs.)	A (in)	B (in)	C (in)	D (in)	E (in)	F (in)	G (in)	H (in)
16	Single Contained	Simplex	65	29	14	18	23	27	19	23	-
	Double Contained	Simplex	95	29	19	23	30	34	19	28	-
32	Single Contained	Simplex	90	29	29	33	22	26	19	38	-
		Duplex	140	29	29	33	22	26	19	38	37
	Double Contained	Simplex	140	30	36	40	26	30	19	45	-
		Duplex	190	30	36	40	26	30	19	45	40
56	Single Contained	Simplex	110	29	32	36	26	30	19	41	-
		Duplex	160	29	32	36	26	30	19	41	39
	Double Contained	Simplex	175	30	38	42	30	34	19	47	-
		Duplex	225	30	38	42	30	34	19	47	40


LEVEL SWITCH TECHNICAL INFORMATION

- Electronic level sensor
- Quick disconnect
- Probe length
L = 18 in
- 3 operating outputs
(OUT1...OUT3)
- 1 overflow output (OUT-OP)
- Indication of the level in inches or cm
- 4-digit alphanumeric display



- 4-digit alphanumeric display
- LEDs
- Programming buttons
- Housing connection (flat-pin connector 6.3 mm following DIN)



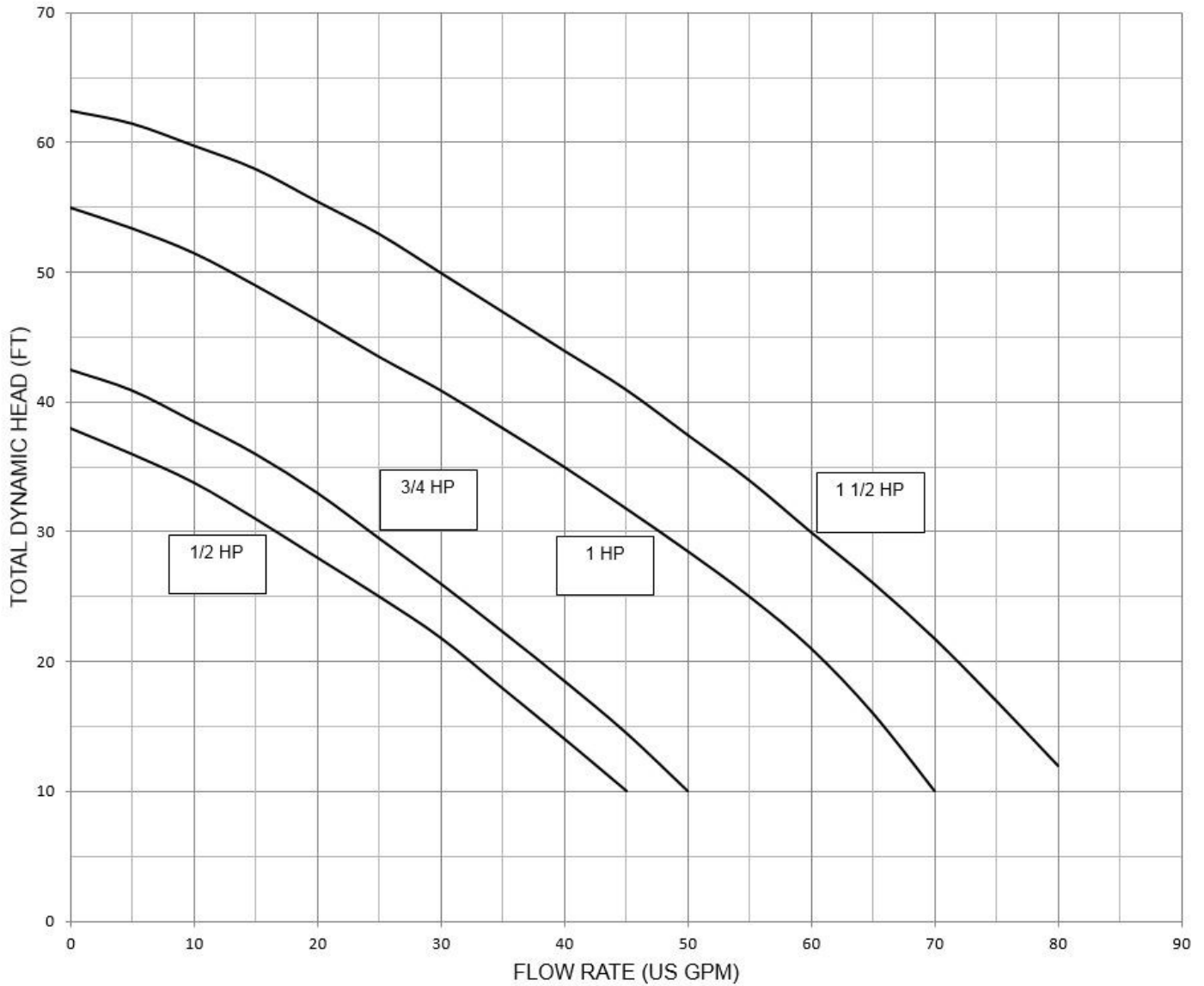
Output configuration in switching mode:
 OUT1...OUT3 = operating outputs
 OUT-OP = overflow output

Output configuration in binary mode:
 OUT1...OUT4 = 8-4-2-1 binary code for level



PUMP PERFORMANCE CURVES

3450 RPM NOMINAL



PUMP MOTOR FULL LOAD AMPS (FLA)

Voltage	1/2 HP	3/4 HP	1 HP	1 1/2 HP
115 VAC / 1-PH / 60 Hz	7.4	9.6	11.8	16
208-230 VAC / 1-PH / 60 Hz	3.7	4.8	5.9	8
208-230 VAC / 3-PH / 60 Hz	2	2.6	3.6	4.6
460 VAC / 3-PH / 60 Hz	1	1.3	1.8	2.3