

BioSINK™ PUMP LIFT STATION (BIOSPLS)



Shown: Standard sink pump lift station



Shown: Standard sink pump lift station detailing control panel access and installed lift station (BIOSPLS18-004-1-PV)

Wastech standard sink pump lift stations are designed to safely and efficiently transfer wastewater when a gravity drain is not possible. Custom configurations and sizes are available, call or e-mail Sales for more information.

Specifications

- Simplex (one pump) or duplex (two pumps) configuration.
- Multipoint level switch assembly with digital level display.
- Includes a high-high level switch to activate a high level alarm.

Standard Features

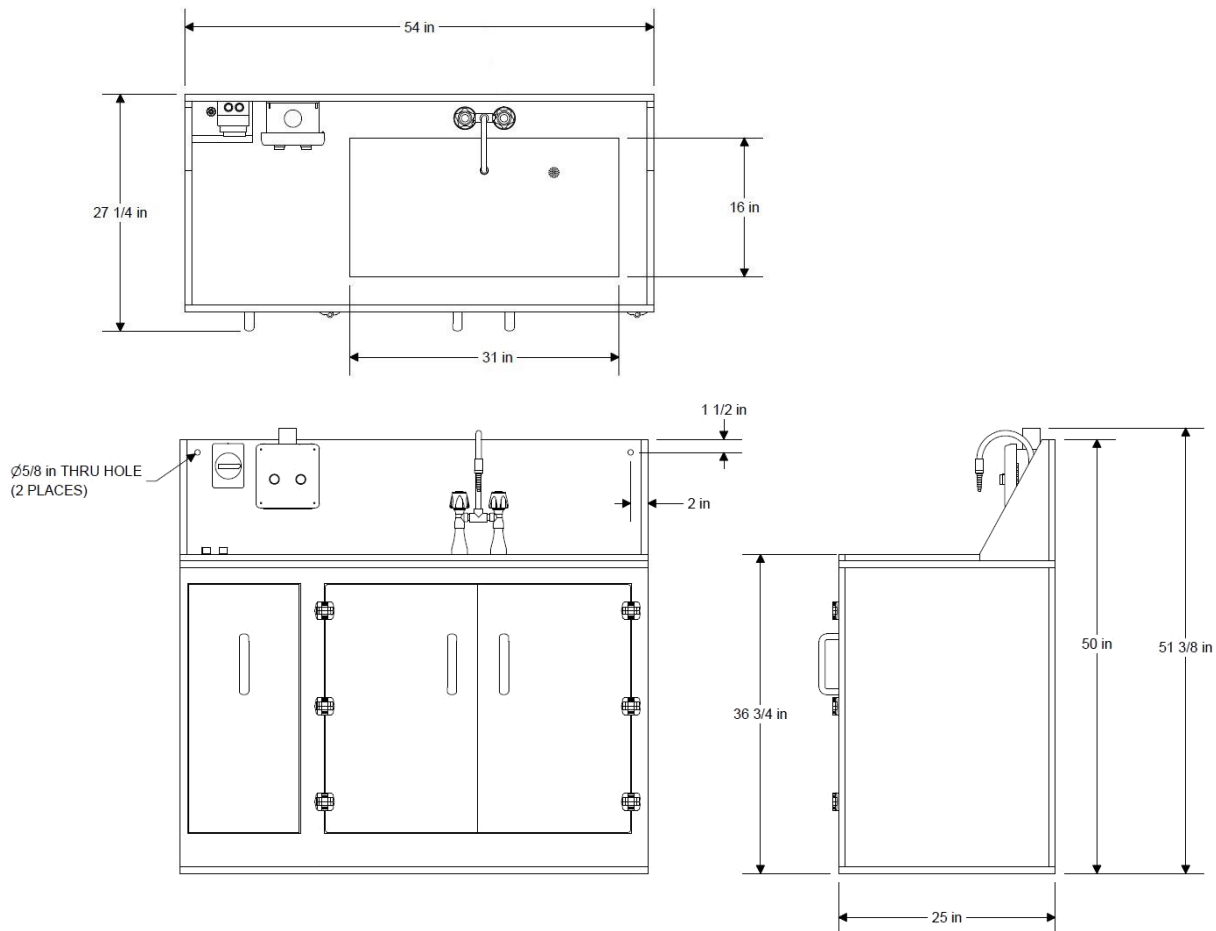
- All polypropylene construction for superior chemical resistance
- Cold and hot water connections for sink faucet
- Fabricated polypropylene tank
- CPVC piping and fittings
- One (simplex) or two (duplex) sump pumps
- Check valve for each pump with Viton elastomers
- Multipoint level switch assembly with digital level display
- Spill pan with leak detection switch
- Integrated UL-listed relay-based NEMA 4 control panel
- Lockable main power disconnect switch
- Audible alarm beacon and buzzer for high level and leak alarms
- Dry contacts for integration with Facility Management System (FMS)

Optional Features

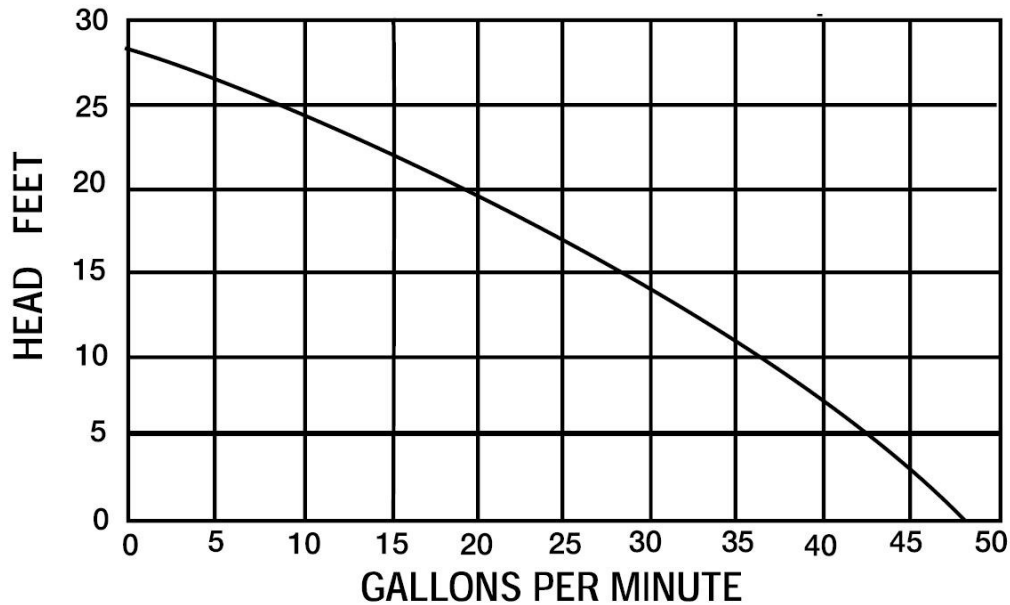
- One (simplex) or two (duplex) sump pumps
- Water heater
- Fire retardant FM approved polypropylene construction

ORDERING INFORMATION

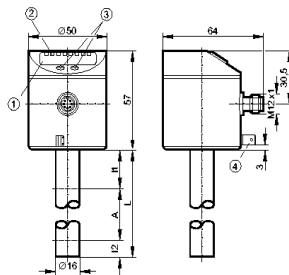
Number of Pumps (Choose One)						
BIOSPLS	Simplex Sink Pump Lift Station					
BIOSDPLS	Duplex Sink Pump Lift Station					
Tank Volume (Choose One)						
-18	18 Gallon Fabricated Polypropylene Tank (Standard)					
-XX	Custom Volumes Available					
Horsepower (Standard)						
-004	0.4 HP					
Power Requirements (Standard)						
-1	115 VAC / 1 / 60 Hz					
Discharge Piping Material (Standard)						
-CP	CPVC Discharge Piping and Diaphragm Valve (Viton Elastomers)					
Options (Choose Any)						
-FM	Fire Retardant FM Approved Polypropylene Construction					
-WT	Water Heater					
Example Part Number						
BIOSDPLS	-18	-004	-1	-PV	-FM	SINK-SPLS-18-004-1-PV-FM


Notes:

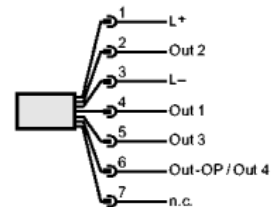
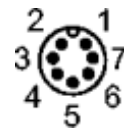
- Standard valve elastomers are Viton. EPDM available upon request.
- Standard lift station connections are socket. Threaded (FNPT) and flanged connections available upon request.
- Dry weight = 375 lbs. Maximum weight (full) = 650 lbs.
- Tolerance for dimensions $\pm 2\%$

PUMP PERFORMANCE CURVE

LEVEL SWITCH TECHNICAL INFORMATION

- Electronic level sensor
- Quick disconnect
- Probe length
L = 18 in
- 3 operating outputs
(OUT1...OUT3)
- 1 overflow output (OUT-OP)
- Indication of the level in
inches or cm
- 4-digit alphanumeric display



- 1: 4-digit alphanumeric display
- 2: LEDs
- 3: Programming buttons
- 4: Housing connection (flat-pin
connector 6.3 mm following DIN



Output configuration in switching mode:
 OUT1...OUT3 = operating outputs
 OUT-OP = overflow output

Output configuration in binary mode:
 OUT1...OUT4 = 8-4-2-1 binary code for level